

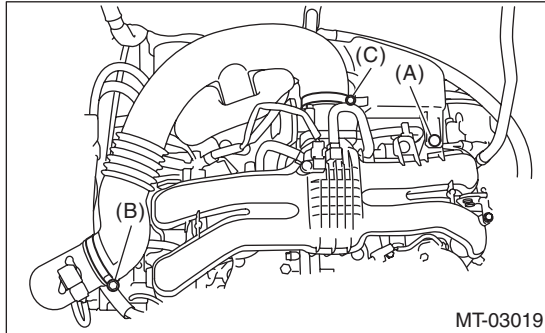
Clutch Pipe and Hose

CLUTCH SYSTEM

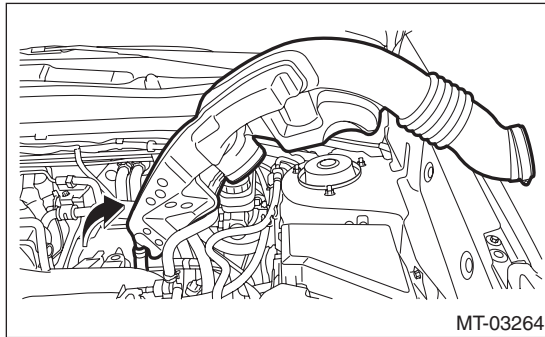
7. Clutch Pipe and Hose

A: REMOVAL

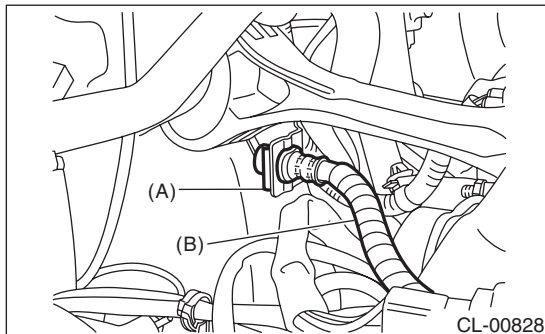
- 1) Remove the clip (A) from the air intake boot.
- 2) Loosen the clamp (B) connecting the air intake boot and air cleaner case (rear).
- 3) Loosen the clamp (C) which connects the air intake boot and throttle body.



- 4) Remove the air intake boot from the throttle body, and move it to the left side wheel apron.



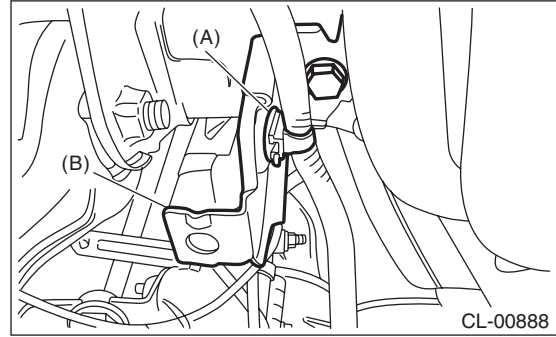
- 5) Drain the clutch fluid. <Ref. to CL-22, Clutch Fluid.>
- 6) Disconnect the clutch pipe from the clutch hose and master cylinder.
- 7) Remove the clamp and disconnect the clutch hose.



- (A) Clamp
(B) Clutch hose

- 8) Remove the clutch hose from operating cylinder.

- 9) Remove the harness clip.



- (A) Harness clip
(B) Bracket

- 10) Remove the bracket.

B: INSTALLATION

Install in the reverse order of removal.

NOTE:

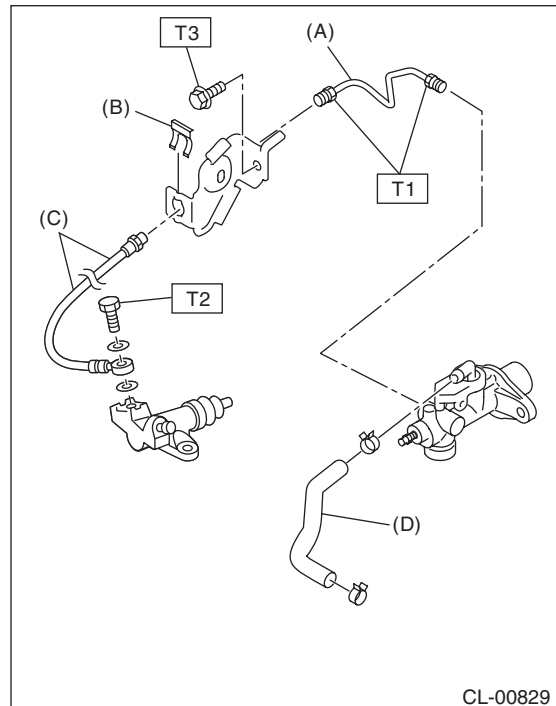
Bleed air from the clutch fluid. <Ref. to CL-23, Clutch Fluid Air Bleeding.>

Tightening torque:

T1: 15 N·m (1.5 kgf-m, 11.1 ft-lb)

T2: 18 N·m (1.8 kgf-m, 13.3 ft-lb)

T3: 25 N·m (2.5 kgf-m, 18.4 ft-lb)



- (A) Clutch pipe
(B) Clamp
(C) Clutch hose
(D) Tank hose

C: INSPECTION

Check the pipes and hoses for breaks and damage. Check joints for fluid leakage. If crack, breakage or damage is found, repair or replace the faulty pipe or hose.